

HexaLine is a recyclable polypropylene trench drain system with a range of innovative features, making installation easier than ever.

The lightweight, cellular construction allows for a simple 'push-fit' of channels and accessories and makes cleaning and maintenance easy.

The wide selection of grate styles and materials make it simple to match any aesthetic and application requirements.

Suitable for pedestrian/light vehicle traffic applications such as:

- Driveways
- Paths
- Garages
- Patios
- Pools

## HexaLine



### Product Overview



Microgrip anti-slip texturing

Microgrip plastic grate with aesthetic slot pattern. Snap fit for easy cleaning & maintenance



Non-metallic drain option

Easy-fit end cap with both male and female connections

Outlet end cap for 100mm pipes

Galvanized steel grate

Corner unit allows easy creation of tees, corners and downpipe connection

Stainless steel ADA grate



Plastic Brickslot grate with tapered 10mm slot



Brickslot corner unit



Hexagonal columns give excellent strength for load bearing

Installation steps marked on underside of channel





Male/female ends for easy slide-fit channel/accessory connections

Cutting guide to create half metre channels



Outlet connector 'push-fits' into underside of channel, in choice of 9 positions. Connection to 100mm pipes

## Product Table

Design	Part No	Length mm	Width mm	Height mm	Weight kg
HexaLine black plastic channel	<b>319200</b>	1000	129	80	0.8
 Galvanized steel grate	<b>38516</b>	1000	118	12	1.2
 Stainless steel HeelGuard® longitudinal grate	<b>10323</b>	1000	118	12	3.2
 Black plastic HeelSafe® microgrip grate	<b>319250</b>	1000	118	12	0.6
 Brickslot HeelGuard® plastic grate	<b>319554</b>	500	125	75	0.4
HexaLine black plastic corner unit with cover	<b>19280</b>	129	129	80	0.2
HexaLine Brickslot black plastic corner unit with cover	<b>319560</b>	125	125	146	0.4
HexaLine accessory pack (2 closing end caps, bottom outlet & leaf guard)	<b>319287</b>	-	-	-	0.2
Black plastic closing end cap	<b>319288</b>	-	129	-	0.1
Black plastic 100mm dia outlet end cap	<b>319289</b>	-	129	-	0.1

HeelGuard® - slots 10mm or less to prevent stiletto style heels becoming trapped. HeelSafe® - offer anti-slip properties in addition to slots 10mm or less.

## Installation Instructions



Excavate trench and fix a string line to determine alignment and finished height of channel run.

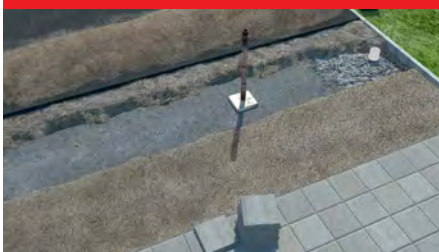
## 4 LAY CHANNELS



Continue to lay channels working away from outlet, channels slide-fit together.

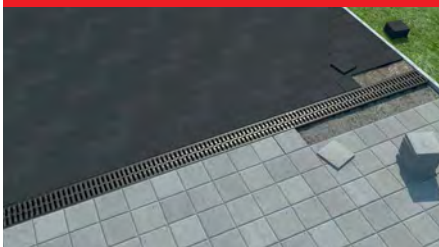
These illustrations are for guidance only, professional guidance should be sought.

## 2 LAY A FIRM BASE



Pour concrete bed - 300mm wide by 100mm deep; keep outlet pipe clean.

## 5 PAVEMENT/BACKFILLING



Pour 100mm concrete around channel sides allowing for pavement detail. Finish pavement surround. Should be 2-3mm above grate.

## 3 START AT OUTLET



Lay channels starting at outlet. Set to string line to ensure level and straight. Seal joints if required.

## 6 BRICKSLOT



Install pavers to required level. Should be 2-3mm above slot. For traffic areas bond pavers to cover and concrete haunch to prevent damage to slot.

**ACO Self Polymer concrete and plastic line drains and in-line pits also available**

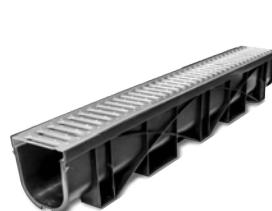


**ACO Limited**

35 Te Tiki Road  
Mangere, Auckland 2022  
New Zealand

Tel: 0800 448 080  
Tel: +64 (0)9 815 9500

© January 2017 ACO Limited.



**Electronic Contact**  
info@aconz.co.nz  
www.acoself.co.nz



All reasonable care has been taken in compiling the information in this document. All recommendations and suggestions on the use of ACO products are made without guarantee since the conditions of use are beyond the control of the Company. It is the customer's responsibility to ensure that each product is fit for its intended purpose and that the actual conditions of use are suitable. ACO Limited reserves the right to change products and specifications without notice.

Re-order LENZ0013

